

INDUCTORS

Radial Power Chokes PKS4W Series

Features:

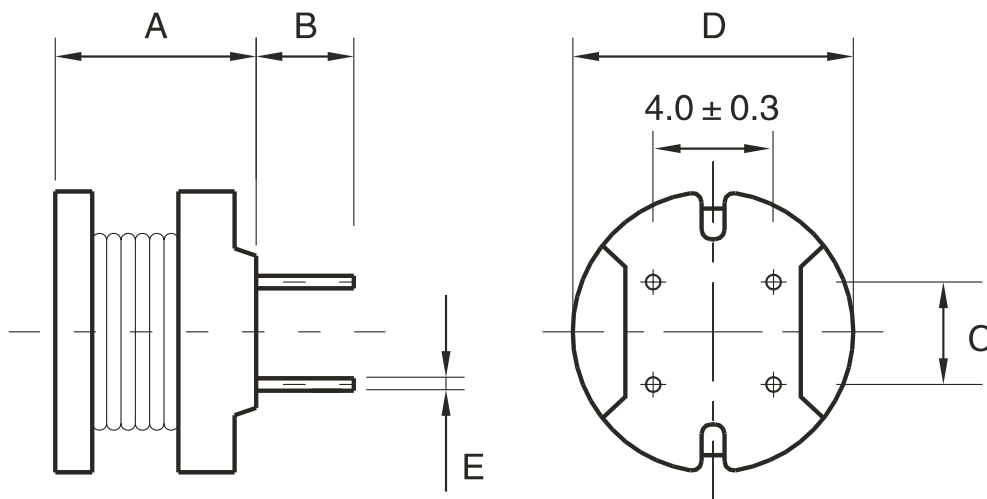
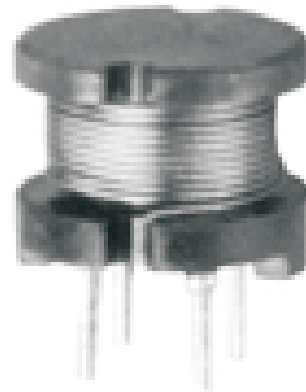
Low cost power inductor.
Low DC Resistance and high current.
Best for the power supply line.
Also have sleeve(UL tube) wrapped to protect the winding.

Applications

Television, VCD, DVD.
Personal computer.
Switching Power Supplies.
Telecommunication devices.

Test equipment:

L : HP4284A or HP4285A LCR meter.
DCR: Millil-ohm meter.



P/N	D(Max)	A(Max)	B(±2mm)	C ± 0.5	E ± 0.05
PKS4W1006	10.5	6.50	3.5	5.0	0.8
PKS4W1008	10.5	8.50	3.5	5.0	0.8
PKS4W1010	10.5	10.5	3.5	5.0	0.8
PKS4W1014	10.5	14.40	5.0	5.0	0.8

ORDER INFORMATION

KLS18-PKS4W XXXX-XXX K

Inductance Tolerance : K=10% M=20%
Inductance Value
Part Number

Radial Power Chokes PKS4W Series



PART NO.	L (uH)	DCR (Ω) Max.				I mA Max.			
		1006	1008	1010	1014	1006	1008	1010	1014
6R3M	6.3			0.026					4.3
7R5M	7.5			0.029					4.2
100M	10	0.04	0.027	0.022	0.033	3.6	4.5	5.3	4
120M	12	0.044	0.031	0.023	0.035	3.3	4.1	4.9	3.9
150M	15	0.058	0.035	0.026	0.039	2.9	3.7	4.4	3.7
180M	18	0.064	0.049	0.033	0.047	2.7	3.4	4	3.5
220M	22	0.088	0.055	0.037	0.051	2.4	3.1	3.6	3.3
270M	27	0.1	0.062	0.048	0.057	2.2	2.8	3.3	3.1
330K	33	0.11	0.079	0.055	0.064	2	2.5	2.9	2.9
390K	39	0.14	0.087	0.073	0.074	1.8	2.3	2.7	2.7
470K	47	0.16	0.099	0.083	0.083	1.7	2.1	2.5	2.5
560K	56	0.19	0.13	0.092	0.104	1.5	1.9	2.3	2.3
680K	68	0.22	0.14	0.12	0.117	1.4	1.7	2.1	2.1
820K	82	0.29	0.16	0.14	0.13	1.3	1.6	1.9	1.9
101K	100	0.32	0.21	0.16	0.143	1.3	1.4	1.7	1.7
121K	120	0.38	0.24	0.2	0.195	1.2	1.3	1.5	1.5
151K	150	0.5	0.32	0.23	0.221	1	1.2	1.4	1.4
181K	180	0.56	0.35	0.31	0.26	0.81	1.1	1.3	1.3
221K	220	0.78	0.45	0.34	0.35	0.76	0.96	1.1	1.2
271K	270	0.92	0.61	0.4	0.39	0.69	0.87	1	1.1
331K	330	1.1	0.69	0.52	0.52	0.62	0.79	0.93	1
391K	390	1.3	0.78	0.65	0.57	0.57	0.72	0.86	0.92
471K	470	1.5	1	0.71	0.65	0.52	0.66	0.78	0.84
561K	560	1.9	1.2	1	0.79	0.48	0.6	0.71	0.75
681K	680	2.2	1.4	1.1	0.96	0.43	0.55	0.65	0.69
821K	820	2.6	1.8	1.3	1.22	0.4	0.5	0.59	0.62
102K	1000	3.2	2.1	1.7	1.6	0.36	0.45	0.53	0.52
122K	1200				2.2				0.46
152K	1500				2.5				0.41
182K	1800				2.9				0.36
222K	2200				3.2				0.32
272K	2700				3.7				0.29
332K	3300				5				0.27
392K	3900				5.6				0.25
472K	4700				7.4				0.23
562K	5600				8.2				0.21
682K	6800				11.9				0.19
822K	8200				14				0.17
103K	10000				16				0.16
123K	12000				21				0.15
153K	15000				24				0.14
183K	18000				27				0.13
223K	22000				34				0.12
273K	27000				39				0.11
333K	33000				51				0.1
393K	39000				58				0.09